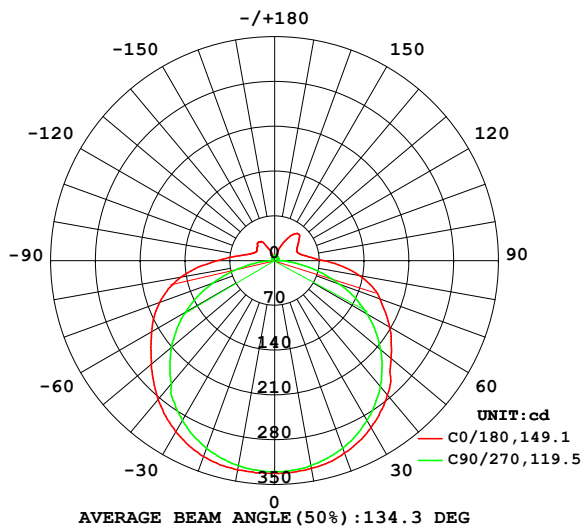


## LUMINAIRE PHOTOMETRIC TEST REPORT

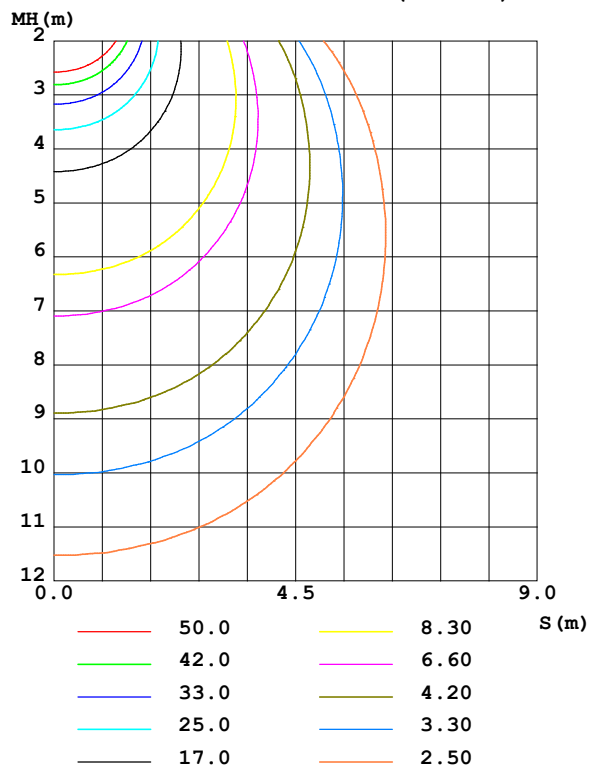
Test:U:100.30V I:0.1640A P:14.500W PF:0.8820 Freq:50.00Hz Lamp Flux:1335.51x1 lm		
NAME:	TYPE:	WEIGHT:
SPEC.:	DIM.:	SERIAL No.:
MFR.: Everfine	SUR.:	Shielding Angle:

DATA OF LAMP		PHOTOMETRIC DATA				Eff: 92.10 lm/W
MODEL	线条灯6000K	I <sub>max</sub> (cd)	332.9	S/MH(C0/180)	1.35	
NOMINAL POWER(W)	15	LOR(%)	100.0	S/MH(C90/270)	1.30	
RATED VOLTAGE(V)	100	TOTAL FLUX(lm)	1335.5	η UP,DN(C0-180)	5.2,44.9	
NOMINAL FLUX(lm)	1335.51	CIE CLASS	SEMI-D.	η UP,DN(C180-360)	5.9,44.0	
LAMPS INSIDE	1	η up (%)	11.1	CIBSE SHR NOM	1.50	
TEST VOLTAGE(V)	100	η down (%)	88.9	CIBSE SHR MAX	1.50	

LUMINOUS INTENSITY DISTRIBUTION DIAGRAM



C0 PLANE ISOLUX DIAGRAM (UNIT:lx)



C Range: 0 - 360DEG  
C Interval: 90.0DEG  
Test Speed: HIGH  
Temperature:25.3℃  
Operators:DAMIN  
Test Date:26 November 2025

γ Range: 0 - 180DEG  
γ Interval: 1.0DEG  
Test System:EVERFINE GO-2000B\_V1 SYSTEM V2.00.459  
Humidity:65.0%  
Test Distance:8.186m [K=1.0000]  
Remarks:

## ZONAL FLUX DIAGRAM

### ZONAL FLUX DIAGRAM:

$\gamma$	C0	C90	C180	C270					$\gamma$	$\Phi$ zone	$\Phi$ total	%lum, lamp
10	332.3	325.3	329.7	325.0					0- 10	31.47	31.47	2.36,2.36
20	325.7	312.1	319.7	311.6					10- 20	91.56	123.0	9.21,9.21
30	309.2	288.1	301.4	288.7					20- 30	142.2	265.2	19.9,19.9
40	283.4	251.2	274.1	256.9					30- 40	177.3	442.5	33.1,33.1
50	251.7	210.3	237.9	216.2					40- 50	191.8	634.3	47.5,47.5
60	222.0	161.0	207.5	166.7					50- 60	187.6	821.9	61.5,61.5
70	191.4	103.1	175.4	107.2					60- 70	165.9	987.8	74,74
80	148.3	42.15	134.4	48.20					70- 80	126.1	1114	83.4,83.4
90	90.36	4.235	77.26	6.772					80- 90	73.82	1188	88.9,88.9
100	50.91	3.658	47.46	4.718					90-100	37.16	1225	91.7,91.7
110	35.50	4.313	38.18	5.207					100-110	24.44	1249	93.5,93.5
120	32.05	4.811	40.85	5.752					110-120	20.31	1270	95.1,95.1
130	35.19	5.405	49.38	6.245					120-130	20.12	1290	96.6,96.6
140	38.56	6.061	55.58	6.699					130-140	20.15	1310	98.1,98.1
150	27.45	6.716	38.83	7.029					140-150	15.42	1325	99.2,99.2
160	9.236	7.311	16.20	7.420					150-160	7.155	1333	99.8,99.8
170	7.799	7.896	7.729	7.728					160-170	2.255	1335	99.9,99.9
180	7.953	8.103	7.944	8.120					170-180	0.7521	1336	100,100
DEG	LUMINOUS INTENSITY:cd									UNIT:lm		

Conical surface Flux(90deg): 537.95 lm

%lum = 40.3%

%lamp = 40.3%

Conical surface Flux(120deg): 821.88 lm

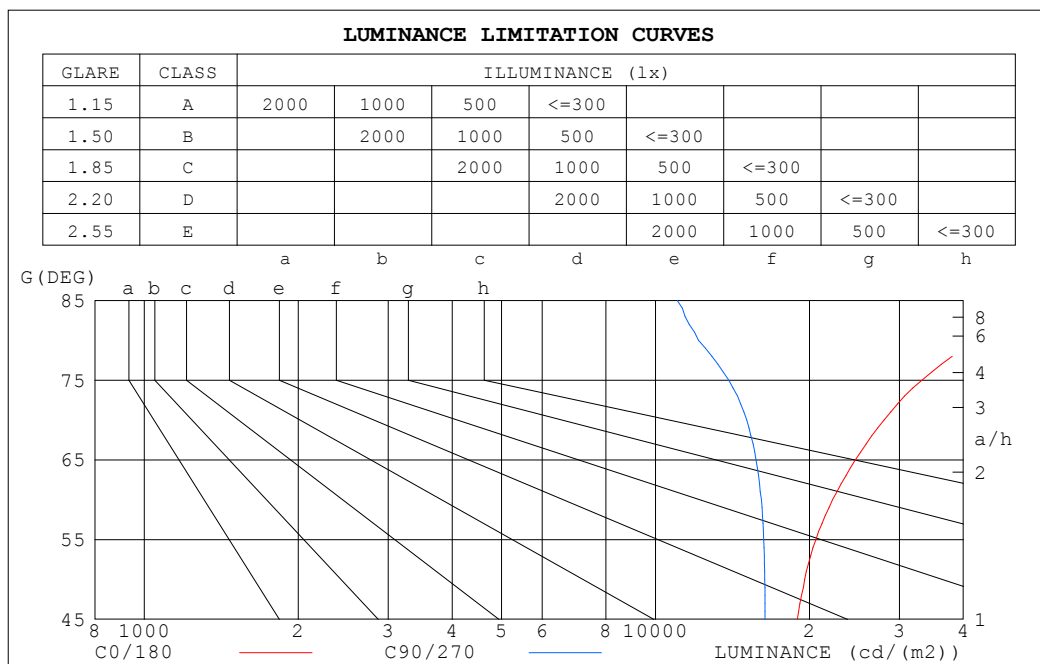
%lum = 61.5%

%lamp = 61.5%

C Range: 0 - 360DEG  
 C Interval: 90.0DEG  
 Test Speed: HIGH  
 Temperature:25.3°C  
 Operators:DAMIN  
 Test Date:26 November 2025

$\gamma$  Range: 0 - 180DEG  
 $\gamma$  Interval: 1.0DEG  
 Test System:EVERFINE GO-2000B\_V1 SYSTEM V2.00.459  
 Humidity:65.0%  
 Test Distance:8.186m [K=1.0000]  
 Remarks:

## LUMINANCE LIMITATION CURVES



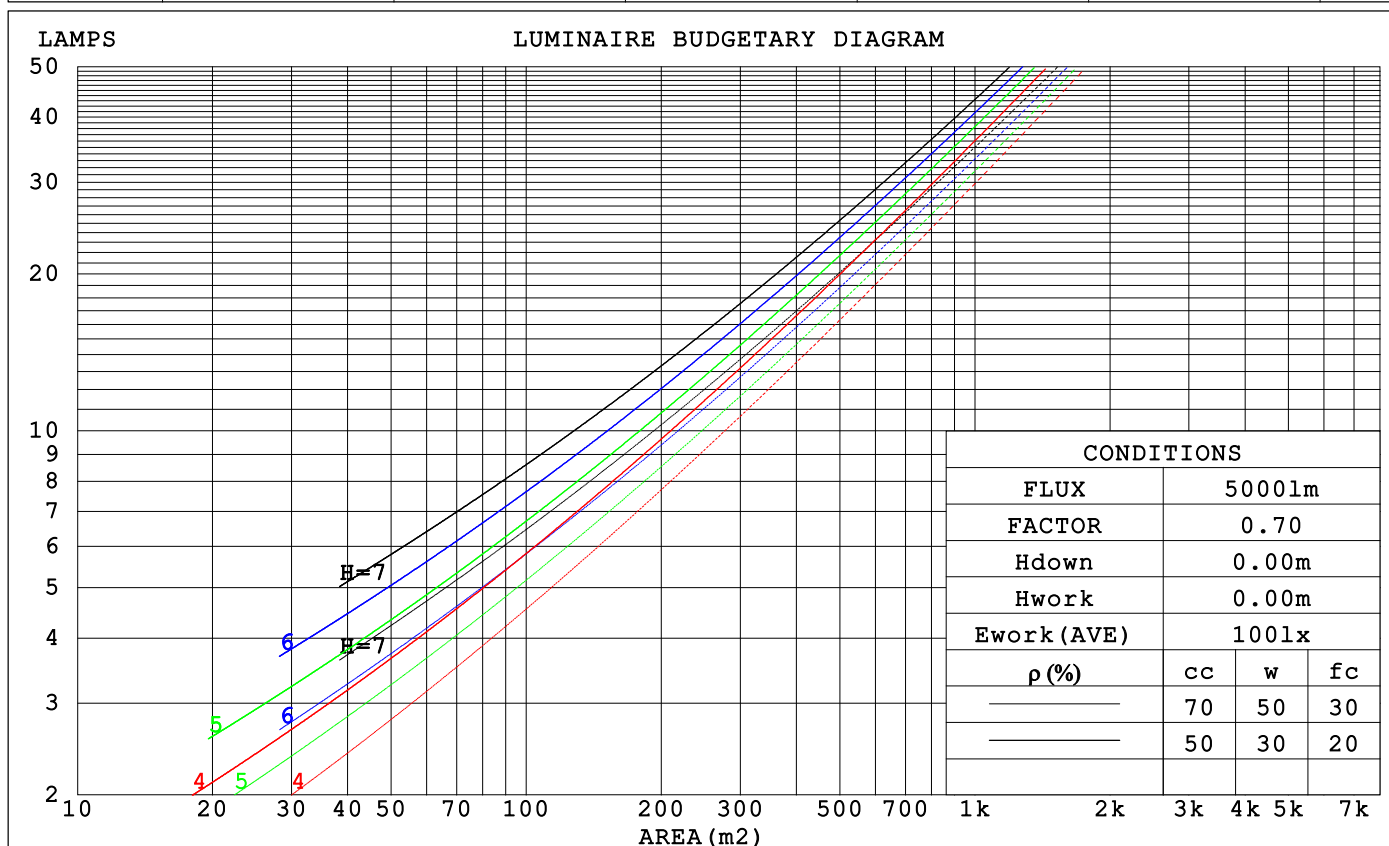
LUMINANCE cd/(m2)		
G (DEG)	C0/180	C90/270
85	68919	11032
80	42688	12136
75	33205	13908
70	27974	15070
65	24600	15734
60	22200	16104
55	20601	16285
50	19580	16357
45	18936	16382

C Range: 0 - 360DEG  
C Interval: 90.0DEG  
Test Speed: HIGH  
Temperature: 25.3°C  
Operators: DAMIN  
Test Date: 26 November 2025

γ Range: 0 - 180DEG  
γ Interval: 1.0DEG  
Test System: EVERFINE GO-2000B\_V1 SYSTEM V2.00.459  
Humidity: 65.0%  
Test Distance: 8.186m [K=1.0000]  
Remarks:

CU AND LUMINAIRE BUDGETARY ESTIMATE DIAGRAM

pcc	80%			70%			50%			30%			10%			0
p <sub>w</sub>	50%	30%	10%	50%	30%	10%	50%	30%	10%	50%	30%	10%	50%	30%	10%	0
p <sub>fc</sub>	20%			20%			20%			20%			20%			0
RCR	RCR:Room Cavity Ratio			Coefficients of Utilization(CU)												
0.0	1.16	1.16	1.16	1.12	1.12	1.12	1.05	1.05	1.05	.98	.98	.98	.92	.92	.92	.89
1.0	.98	.93	.89	.95	.90	.86	.89	.85	.81	.83	.80	.77	.77	.75	.73	.70
2.0	.84	.77	.70	.81	.74	.69	.76	.70	.65	.71	.66	.62	.66	.63	.59	.56
3.0	.73	.64	.57	.71	.63	.56	.66	.59	.54	.62	.56	.51	.58	.53	.49	.46
4.0	.64	.55	.48	.62	.54	.47	.58	.51	.45	.55	.48	.43	.51	.46	.41	.39
5.0	.57	.48	.41	.55	.47	.40	.52	.44	.38	.49	.42	.37	.46	.40	.36	.33
6.0	.51	.42	.35	.50	.41	.35	.47	.39	.33	.44	.37	.32	.41	.36	.31	.29
7.0	.46	.37	.31	.45	.36	.30	.42	.35	.29	.40	.33	.28	.38	.32	.27	.25
8.0	.42	.33	.27	.41	.33	.27	.39	.31	.26	.36	.30	.25	.34	.29	.24	.22
9.0	.38	.30	.24	.37	.29	.24	.35	.28	.23	.34	.27	.23	.32	.26	.22	.20
10.0	.35	.27	.22	.34	.27	.22	.33	.26	.21	.31	.25	.20	.29	.24	.20	.18



C Range: 0 - 360DEG  
 C Interval: 90.0DEG  
 Test Speed: HIGH  
 Temperature:25.3°C  
 Operators:DAMIN  
 Test Date:26 November 2025

γ Range: 0 - 180DEG  
 γ Interval: 1.0DEG  
 Test System:EVERFINE GO-2000B\_V1 SYSTEM V2.00.459  
 Humidity:65.0%  
 Test Distance:8.186m [K=1.0000]  
 Remarks:

### WEC AND CCEC

$\rho_{cc}$	80%			70%			50%			30%			10%			0	
$\rho_w$	50%	30%	10%	50%	30%	10%	50%	30%	10%	50%	30%	10%	50%	30%	10%	0	
$\rho_{fc}$	20%			20%			20%			20%			20%			0	
RCR	RCR:Room Cavity Ratio						Wall Exitance Coefficients (WEC)										
0.0																	
1.0	.365	.208	.066	.355	.202	.064	.335	.192	.061	.317	.183	.059	.300	.174	.056		
2.0	.325	.178	.055	.315	.174	.053	.297	.165	.051	.281	.158	.049	.266	.150	.047		
3.0	.292	.155	.047	.283	.152	.046	.267	.145	.044	.252	.138	.042	.239	.132	.041		
4.0	.264	.137	.040	.257	.134	.040	.242	.129	.038	.229	.123	.037	.216	.118	.036		
5.0	.241	.123	.036	.234	.120	.035	.221	.115	.034	.209	.110	.033	.198	.106	.032		
6.0	.222	.111	.032	.216	.109	.031	.204	.104	.030	.193	.100	.029	.182	.096	.029		
7.0	.205	.101	.029	.199	.099	.028	.189	.095	.027	.178	.091	.027	.169	.088	.026		
8.0	.190	.093	.026	.185	.091	.026	.175	.088	.025	.166	.084	.024	.158	.081	.024		
9.0	.178	.086	.024	.173	.084	.024	.164	.081	.023	.155	.078	.022	.147	.075	.022		
10.0	.166	.080	.022	.162	.078	.022	.154	.075	.021	.146	.072	.021	.139	.070	.020		

$\rho_{cc}$	80%			70%			50%			30%			10%			0	
$\rho_w$	50%	30%	10%	50%	30%	10%	50%	30%	10%	50%	30%	10%	50%	30%	10%	0	
$\rho_{fc}$	20%			20%			20%			20%			20%			0	
RCR	RCR:Room Cavity Ratio						Ceiling Cavity Exitance Coefficients (CCEC)										
0.0	.275	.275	.275	.235	.235	.235	.160	.160	.160	.092	.092	.092	.029	.029	.029		
1.0	.269	.241	.215	.230	.207	.185	.158	.142	.128	.091	.082	.074	.029	.026	.024		
2.0	.262	.217	.180	.225	.187	.155	.154	.129	.108	.089	.075	.063	.028	.024	.021		
3.0	.255	.200	.157	.218	.173	.136	.150	.120	.096	.087	.070	.056	.028	.023	.018		
4.0	.247	.188	.142	.212	.162	.124	.146	.113	.087	.084	.066	.052	.027	.022	.017		
5.0	.239	.178	.132	.206	.154	.115	.142	.107	.081	.082	.063	.048	.026	.021	.016		
6.0	.232	.170	.125	.199	.147	.109	.138	.103	.077	.080	.060	.046	.026	.020	.015		
7.0	.225	.163	.120	.193	.141	.104	.134	.099	.074	.078	.058	.044	.025	.019	.015		
8.0	.218	.157	.115	.188	.136	.101	.130	.096	.071	.076	.057	.043	.024	.019	.014		
9.0	.212	.152	.112	.183	.132	.098	.127	.093	.070	.074	.055	.041	.024	.018	.014		
10.0	.206	.148	.110	.178	.129	.096	.123	.091	.068	.072	.054	.041	.023	.018	.013		

C Range: 0 - 360DEG  
 C Interval: 90.0DEG  
 Test Speed: HIGH  
 Temperature: 25.3°C  
 Operators: DAMIN  
 Test Date: 26 November 2025

$\gamma$  Range: 0 - 180DEG  
 $\gamma$  Interval: 1.0DEG  
 Test System: EVERFINE GO-2000B\_V1 SYSTEM V2.00.459  
 Humidity: 65.0%  
 Test Distance: 8.186m [K=1.0000]  
 Remarks:

UGR(Unified Glare Rating) Table

ceiling/cavity	0.7	0.7	0.5	0.5	0.3	0.7	0.7	0.5	0.5	0.3
walls	0.5	0.3	0.5	0.3	0.3	0.5	0.3	0.5	0.3	0.3
working plane	0.2	0.2	0.2	0.2	0.2	0.2	0.2	0.2	0.2	0.2
Room dimensions	Viewed crosswise					Viewed endwise				
x = 2H y = 2H	23.0	24.5	23.4	24.9	25.3	21.9	23.3	22.3	23.7	24.2
3H	25.6	26.9	26.0	27.3	27.8	23.5	24.9	24.0	25.3	25.8
4H	26.9	28.2	27.4	28.6	29.1	24.2	25.5	24.7	25.9	26.4
6H	28.3	29.6	28.8	30.0	30.5	24.7	25.9	25.2	26.3	26.9
8H	29.1	30.3	29.6	30.7	31.3	24.8	26.0	25.3	26.5	27.0
12H	29.9	31.0	30.4	31.5	32.1	24.9	26.0	25.4	26.5	27.1
4H 2H	23.6	24.9	24.1	25.4	25.8	22.8	24.1	23.3	24.5	25.0
3H	26.4	27.5	26.9	28.0	28.5	24.7	25.8	25.2	26.3	26.9
4H	27.9	28.9	28.4	29.4	30.0	25.5	26.6	26.1	27.1	27.6
6H	29.5	30.4	30.0	30.9	31.5	26.2	27.1	26.7	27.6	28.2
8H	30.3	31.2	30.9	31.7	32.4	26.4	27.2	27.0	27.8	28.4
12H	31.3	32.1	31.9	32.6	33.3	26.5	27.3	27.1	27.9	28.5
8H 4H	28.2	29.0	28.7	29.6	30.2	26.2	27.1	26.8	27.6	28.3
6H	30.0	30.7	30.6	31.3	32.0	27.1	27.9	27.7	28.4	29.1
8H	31.0	31.7	31.6	32.3	33.0	27.5	28.2	28.1	28.8	29.5
12H	32.2	32.7	32.8	33.4	34.1	27.8	28.4	28.5	29.0	29.7
12H 4H	28.2	29.0	28.8	29.5	30.2	26.4	27.2	27.0	27.8	28.4
6H	30.1	30.7	30.7	31.3	32.0	27.5	28.1	28.1	28.7	29.4
8H	31.2	31.8	31.8	32.4	33.1	28.0	28.5	28.6	29.1	29.9
Variations with the observer position at spacings(CIE Pub.117):										
S = 1.0H	+ 0.1 / - 0.1					+ 0.1 / - 0.2				
1.5H	+ 0.2 / - 0.2					+ 0.2 / - 0.3				
2.0H	+ 0.2 / - 0.3					+ 0.2 / - 0.5				

CIE Pub.117, 1336 lm Total Lamp Luminous Flux Corrected (8log(F/F0) = 1.0)  
Area: 0.02 m2

C Range: 0 - 360DEG  
C Interval: 90.0DEG  
Test Speed: HIGH  
Temperature:25.3℃  
Operators:DAMIN  
Test Date:26 November 2025

γ Range: 0 - 180DEG  
γ Interval: 1.0DEG  
Test System:EVERFINE GO-2000B\_V1 SYSTEM V2.00.459  
Humidity:65.0%  
Test Distance:8.186m [K=1.0000]  
Remarks:

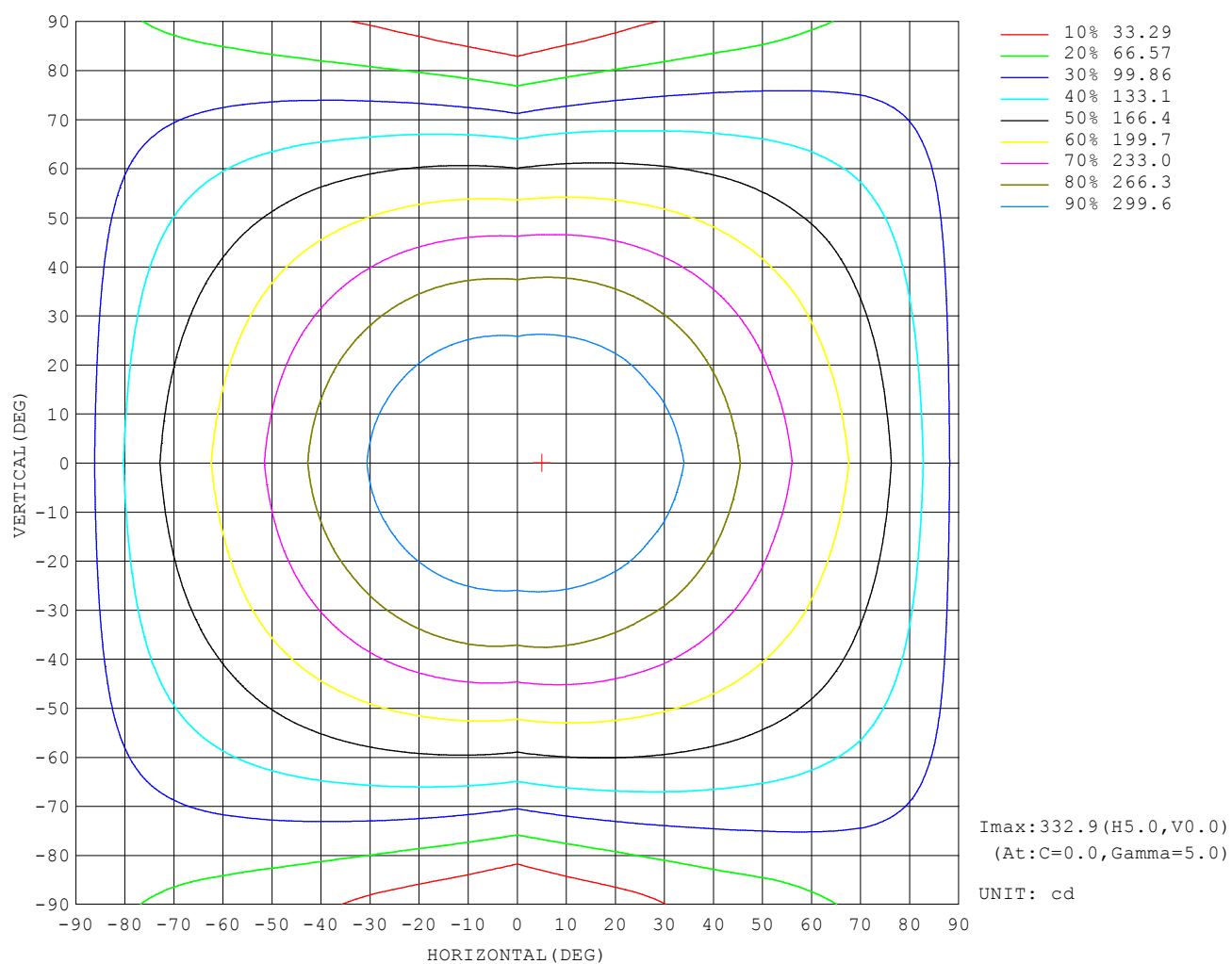
### UTILIZATION FACTORS TABLE

REFLECTANCE										
Ceiling	0.8	0.8	0.8	0.7	0.7	0.7	0.5	0.5	0.5	0
Walls	0.7	0.5	0.3	0.7	0.5	0.3	0.7	0.5	0.3	0
Working plane	0.2	0.2	0.2	0.2	0.2	0.2	0.2	0.2	0.2	0
ROOM INDEX	UTILIZATION FACTORS (PERCENT) $k(RI) \times RCR = 5$									
$k = 0.60$	51	39	31	50	38	31	48	37	31	24
0.80	60	48	40	59	47	39	56	46	39	31
1.00	68	56	48	66	55	47	63	56	46	38
1.25	75	63	55	73	62	54	69	60	53	44
1.50	80	69	61	78	67	60	74	65	58	48
2.00	88	77	70	85	75	68	80	72	66	55
2.50	92	83	75	89	80	74	84	76	71	60
3.00	96	87	80	92	85	79	87	80	75	64
4.00	100	93	87	97	90	85	91	85	81	68
5.00	103	97	92	100	94	89	93	89	85	72
ROOM INDEX	UF (total)									Direct
According to DIN EN 13032-2 2004			Suspended					SHRNOM = 1.25		

C Range: 0 - 360DEG  
 C Interval: 90.0DEG  
 Test Speed: HIGH  
 Temperature: 25.3°C  
 Operators: DAMIN  
 Test Date: 26 November 2025

γ Range: 0 - 180DEG  
 γ Interval: 1.0DEG  
 Test System: EVERFINE GO-2000B\_V1 SYSTEM V2.00.459  
 Humidity: 65.0%  
 Test Distance: 8.186m [K=1.0000]  
 Remarks:

## ISOCANDELA DIAGRAM

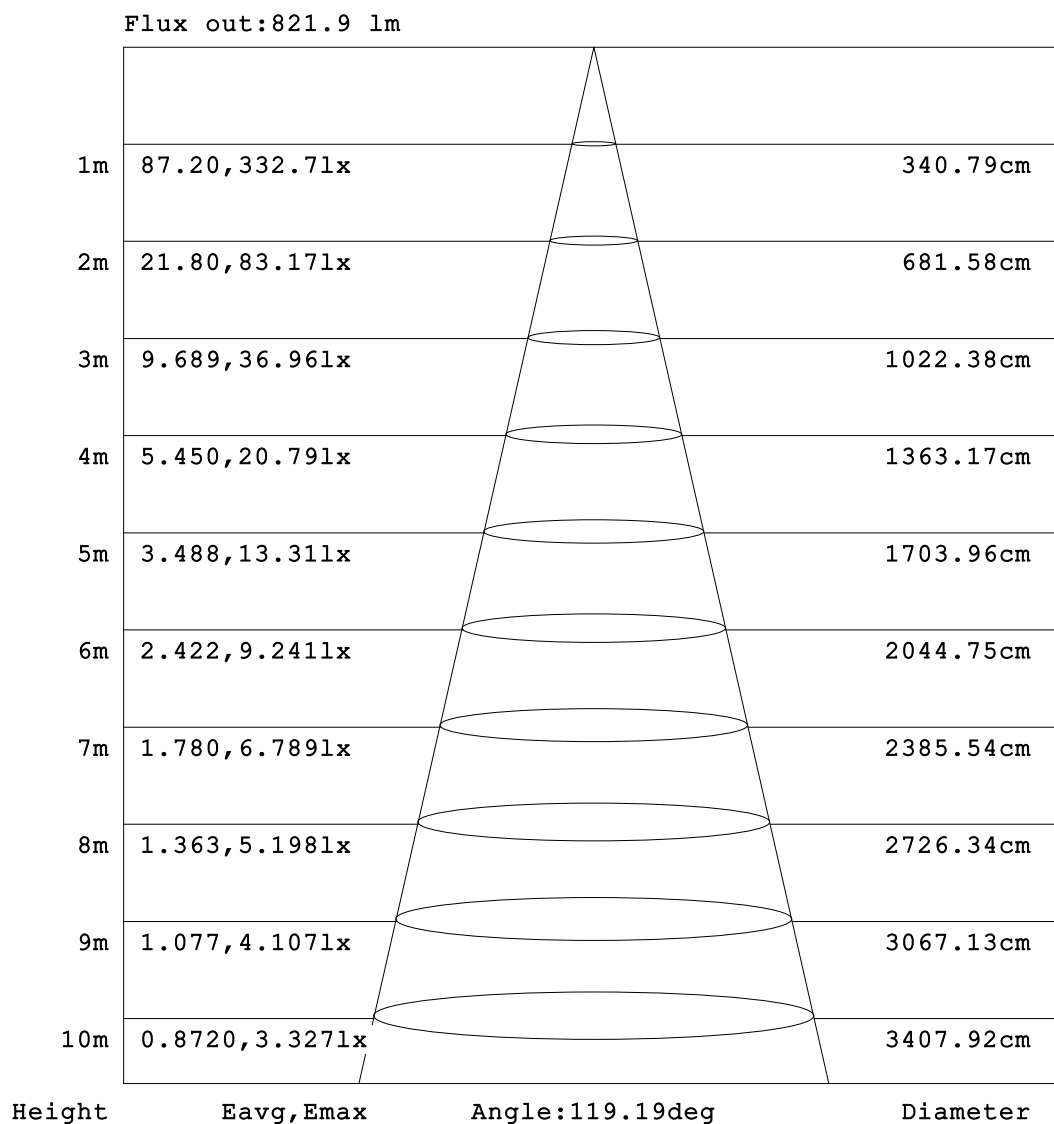


C Range: 0 - 360DEG  
C Interval: 90.0DEG  
Test Speed: HIGH  
Temperature: 25.3°C  
Operators: DAMIN  
Test Date: 26 November 2025

$\gamma$  Range: 0 - 180DEG  
 $\gamma$  Interval: 1.0DEG  
Test System: EVERFINE GO-2000B\_V1 SYSTEM V2.00.459  
Humidity: 65.0%  
Test Distance: 8.186m [K=1.0000]  
Remarks:



### AAI Figure

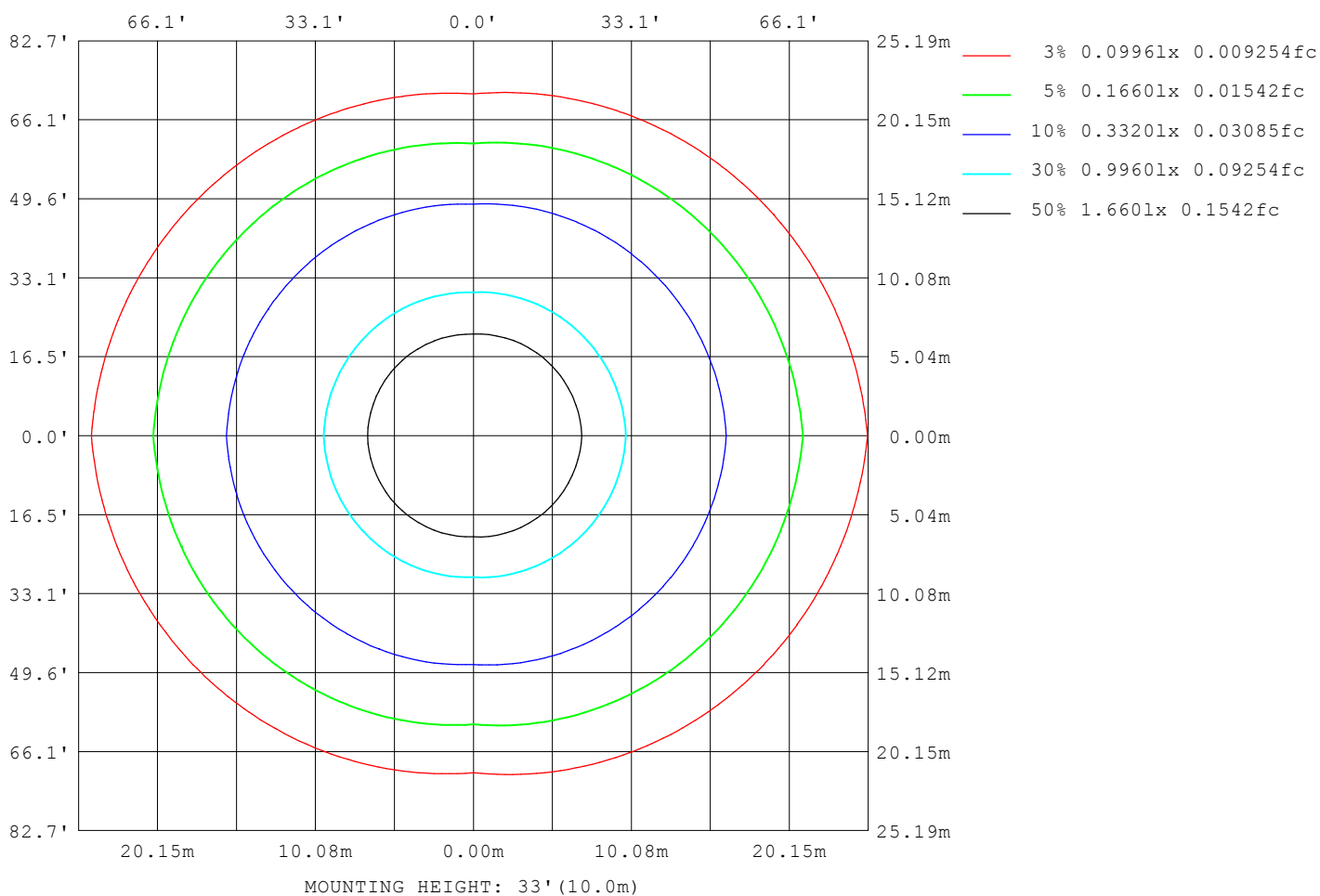


Note:The Curves indicate the illuminated area and the average illumination when the luminaire is at different distance.

C Range: 0 - 360DEG  
C Interval: 90.0DEG  
Test Speed: HIGH  
Temperature:25.3°C  
Operators:DAMIN  
Test Date:26 November 2025

γ Range: 0 - 180DEG  
γ Interval: 1.0DEG  
Test System:EVERFINE GO-2000B\_V1 SYSTEM V2.00.459  
Humidity:65.0%  
Test Distance:8.186m [K=1.0000]  
Remarks:

# ISOLUX DIAGRAM



C Range: 0 - 360DEG  
C Interval: 90.0DEG  
Test Speed: HIGH  
Temperature:25.3°C  
Operators:DAMIN  
Test Date:26 November 2025

γ Range: 0 - 180DEG  
γ Interval: 1.0DEG  
Test System:EVERFINE GO-2000B\_V1 SYSTEM V2.00.459  
Humidity:65.0%  
Test Distance:8.186m [K=1.0000]  
Remarks:

### LED Avg.L Report

Test:U:100.30V I:0.1640A P:14.500W PF:0.8820 Freq:50.00Hz Lamp Flux:1335.51x1 lm		
NAME:	TYPE:	WEIGHT:
SPEC.:	DIM.:	SERIAL No.:
MFR.: Everfine	SUR.:	Shielding Angle:

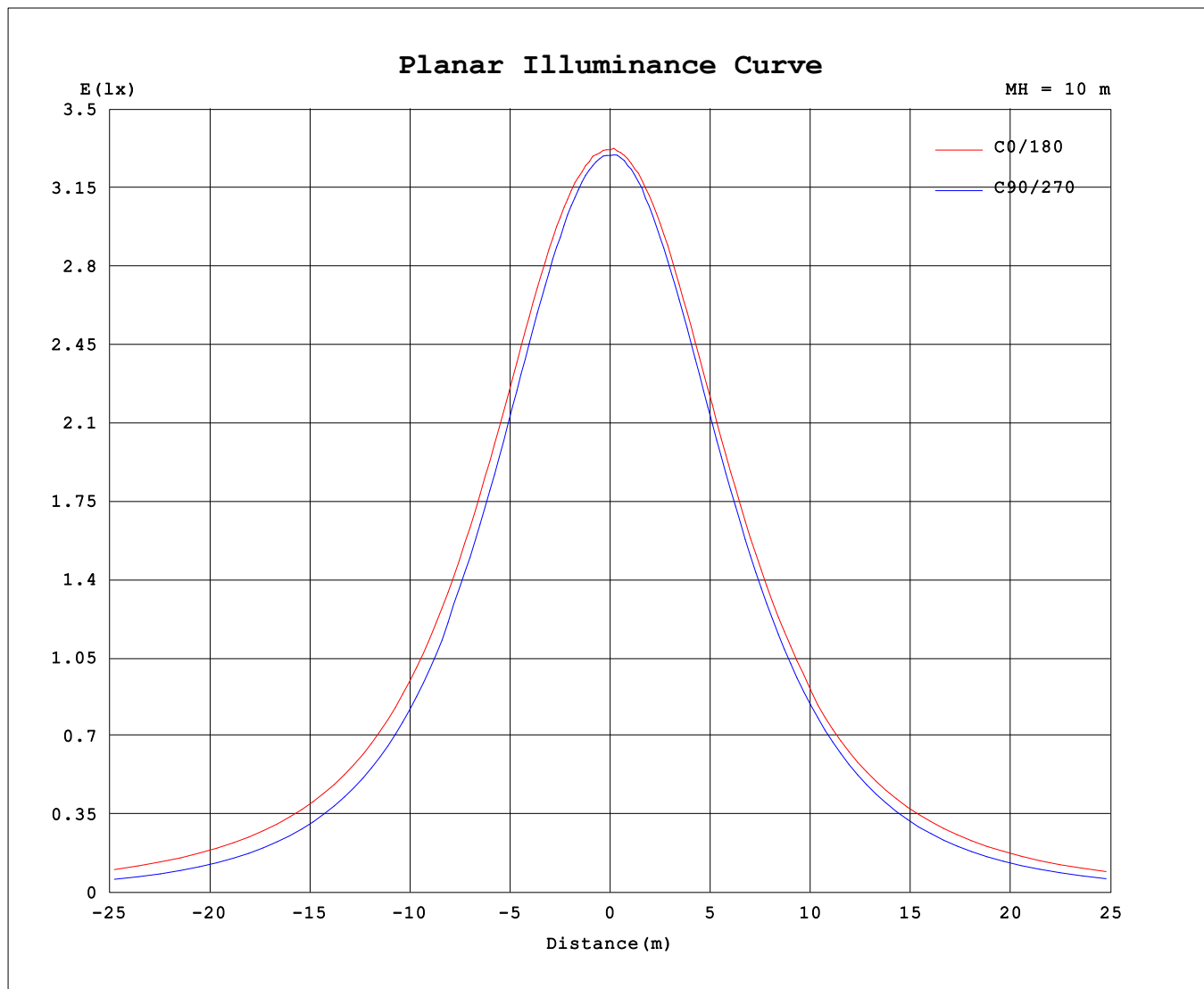
AvgL	cd/m2
L_0~180 (65) av	23602
L_0~180 (75) av	31876
L_0~180 (85) av	65065
L_90~270 (65) av	16125
L_90~270 (75) av	14407
L_90~270 (85) av	12294
L_45 (65) av	18866
L_45 (75) av	20875
L_45 (85) av	31842

Standard: GB/T 29293-2012

C Range: 0 - 360DEG  
C Interval: 90.0DEG  
Test Speed: HIGH  
Temperature:25.3℃  
Operators:DAMIN  
Test Date:26 November 2025

γ Range: 0 - 180DEG  
γ Interval: 1.0DEG  
Test System:EVERFINE GO-2000B\_V1 SYSTEM V2.00.459  
Humidity:65.0%  
Test Distance:8.186m [K=1.0000]  
Remarks:

### Planar Illuminance Curve



C Range: 0 - 360DEG  
 C Interval: 90.0DEG  
 Test Speed: HIGH  
 Temperature: 25.3°C  
 Operators: DAMIN  
 Test Date: 26 November 2025

γ Range: 0 - 180DEG  
 γ Interval: 1.0DEG  
 Test System: EVERFINE GO-2000B\_V1 SYSTEM V2.00.459  
 Humidity: 65.0%  
 Test Distance: 8.186m [K=1.0000]  
 Remarks:

## LUMINOUS DISTRIBUTION INTENSITY DATA

Table--1

UNIT: cd

C (DEG) γ (DEG)	0	90	180	270															
0	332	330	332	330															
5	333	329	332	329															
10	332	325	330	325															
15	330	320	327	320															
20	326	312	320	312															
25	318	302	312	301															
30	309	288	301	289															
35	297	273	288	274															
40	283	251	274	257															
45	268	232	256	237															
50	252	210	238	216															
55	236	187	223	193															
60	222	161	208	167															
65	208	133	191	140															
70	191	103	175	107															
75	172	72.0	158	77.2															
80	148	42.1	134	48.2															
85	120	19.2	107	23.6															
90	90.4	4.24	77.3	6.77															
95	67.7	3.28	57.8	4.52															
100	50.9	3.66	47.5	4.72															
105	40.8	3.89	41.0	5.15															
110	35.5	4.31	38.2	5.21															
115	32.6	4.54	38.5	5.47															
120	32.0	4.81	40.9	5.75															
125	33.9	5.09	45.0	5.98															
130	35.2	5.40	49.4	6.24															
135	38.4	5.71	55.4	6.48															
140	38.6	6.06	55.6	6.70															
145	36.9	6.40	50.0	6.86															
150	27.5	6.72	38.8	7.03															
155	17.7	7.07	28.6	7.22															
160	9.24	7.31	16.2	7.42															
165	7.68	7.59	8.22	7.59															
170	7.80	7.90	7.73	7.73															
175	7.93	8.06	7.72	7.93															
180	7.95	8.10	7.94	8.12															

C Range: 0 - 360DEG

C Interval: 90.0DEG

Test Speed: HIGH

Temperature:25.3℃

Operators:DAMIN

Test Date:26 November 2025

γ Range: 0 - 180DEG

γ Interval: 1.0DEG

Test System:EVERFINE GO-2000B\_V1 SYSTEM V2.00.459

Humidity:65.0%

Test Distance:8.186m [K=1.0000]

Remarks: